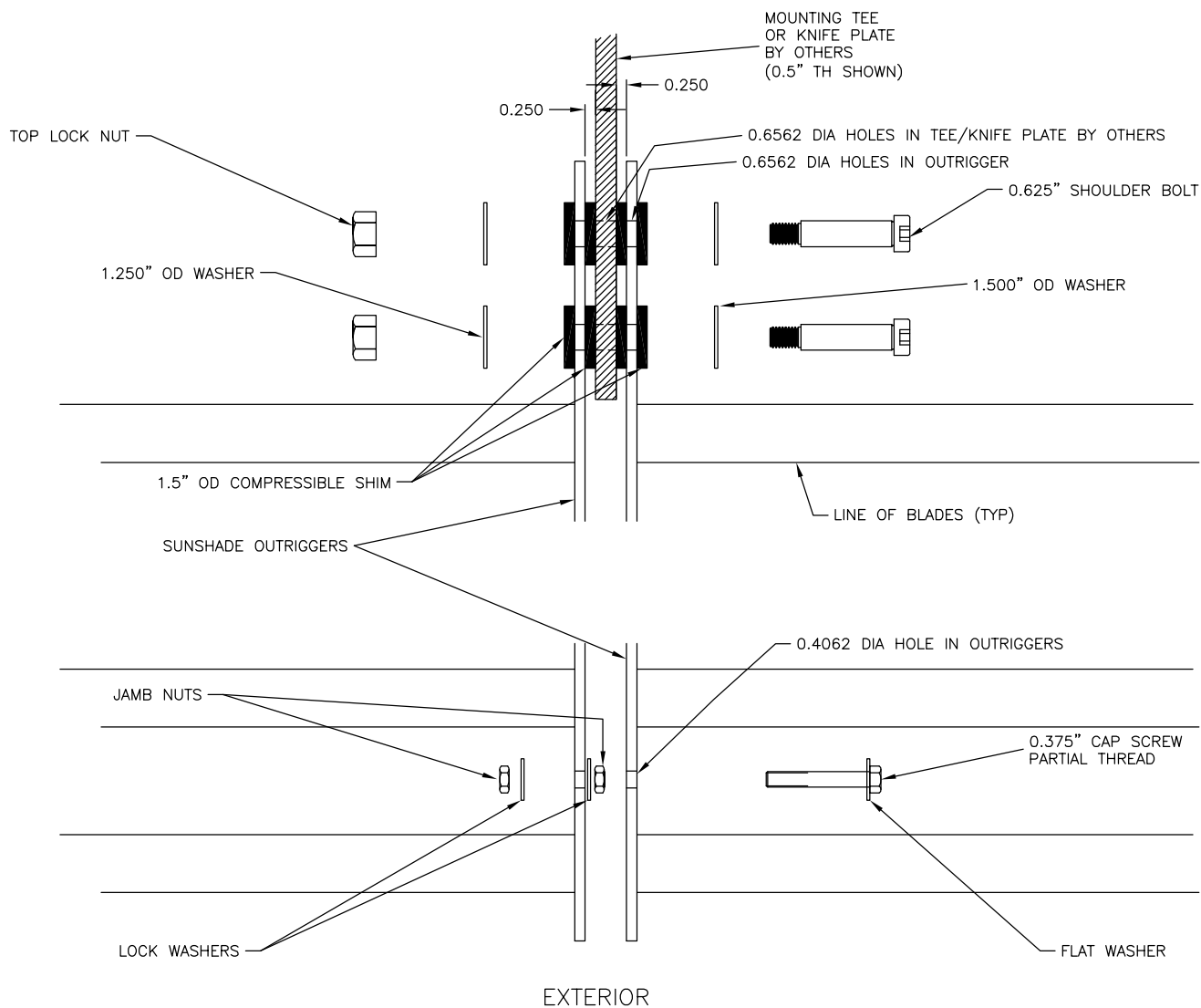


## MULLION ATTACHMENT



## ALIGNMENT PINNING



DRAWN BY: RH

SCALE: NONE

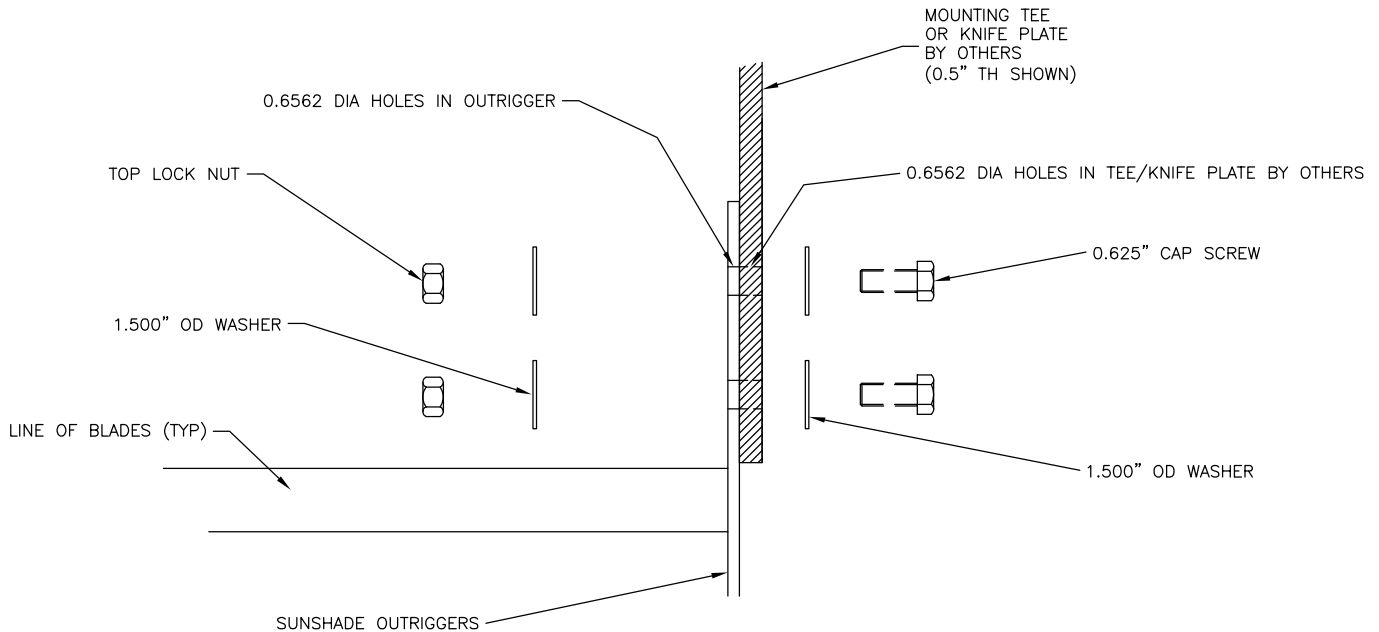
DATE: 2/7/07

**TYPICAL SUN CONTROL DETAIL:  
KNIFE PLATE OR BRACKET  
ATTACHMENT AND ALIGNMENT PIN**

REV. NO: 1

FORM NO: SH 1 OF 2

## END ATTACHMENT



### INSTALLATION INSTRUCTIONS

- 1- PUT END SECTION IN PLACE.
- 2- SLIDE BOLT THRU ONE WASHER AND THEN THRU KNIFE PLATE & OUTRIGGER.
- 3- ADD WASHER & NUT AND TIGHTEN DOWN.
- 4- TO ATTACH MULLIONS, SUPPORT MULLION SIDE OF SUNSHADE AND LAY NEXT SECTION IN PLACE.
- 5- PLACE COMPRESSIBLE SHIMS BETWEEN KNIFE PLATE AND OUTRIGGERS.
- 6- SLIDE 1.5" OD WASHER AND ANOTHER COMPRESSIBLE SHIM ON TO SHOULDER BOLT.
- 7- MAKE SURE OUTRIGGER HOLE & HOLE IN KNIFE PLATE ARE ALIGNED & SLIDE SHOULDER BOLT THRU HOLES.
- 8- SLIDE ANOTHER COMPRESSIBLE SHIM AND 1.25" OD WASHER ON THREADED END OF SHOULDER BOLT AND THREAD NUT ON TIGHT.
- 9- REPEAT FOR ALL HOLES.
- 10 - ATTACHING ALIGNMENT PINS AT FRONT OF SUNSHADES.
- 11- SLIDE .375 BOLT THRU FLAT WASHER AND THRU FIRST OUTRIGGER.
- 12 - THREAD NUT ON BOLT TO END OF THREADS & SLIDE LOCK WASHER ON.
- 13- SLIDE BOLT THRU THE OTHER OUTRIGGER AND ADD LOCK WASHER & NUT.
- 14- ADJUST BOTH NUTS TO TIGHTEN DOWN ON ONE OUTRIGGER ALLOWING SHOULDER END OF BOLT TO MOVE FREELY THRU THE OTHER OUTRIGGER.

**\*\*NOTE. THESE CONNECTIONS ALLOW FOR THERMAL EXPANSION AT THE MULLIONS. DO NOT ADD ADDITIONAL WASHERS TO MAKE CONNECTION TIGHTER. HOLES IN OUTRIGGERS AND KNIFE PLATES SIZED AT ONLY 1/32" OVER SIZE TO REDUCE POSSIBILITY OF SAG AT FRONT OF SUNSHADE.**

**\*\* MOUNTING TEE OR KNIFE PLATE DESIGN MUST BE STRUCTURALLY ADEQUATE TO SUPPORT SUNSHADES & ALL LOADS IMPOSED. AIROLITE SHOP DRAWINGS WILL SHOW LOADS IMPOSED BY SUNSHADES.**



DRAWN BY: RH

SCALE: NONE

DATE: 2/7/07

**TYPICAL SUN CONTROL DETAIL:  
KNIFE PLATE OR  
BRACKET ATTACHMENT**

REV. NO: 1

FORM NO: SH 2 OF 2