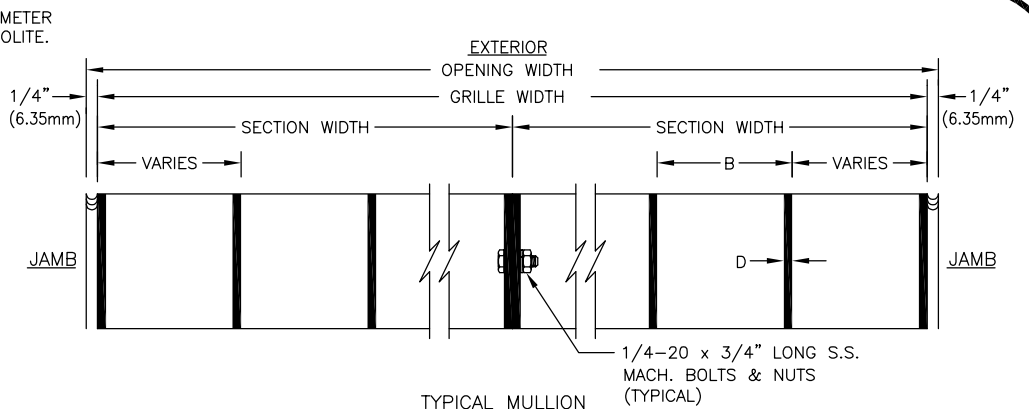
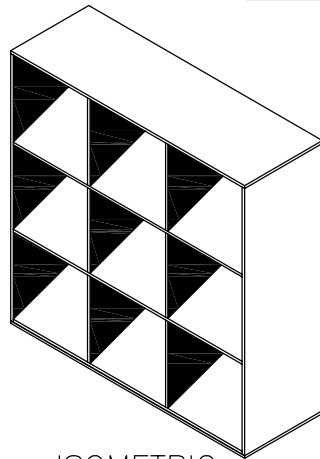


VERTICAL SECTION



TYPICAL MULLION  
HORIZONTAL SECTION



ISOMETRIC

SECTION SIZE LIMITS

	MINIMUM	MAXIMUM
WIDTH	10" (254MM)	120" * (3048MM)
HEIGHT	10" (254MM)	120" * (3048MM)
AREA		40 SQ. FT. (3.72M <sup>2</sup> )

\* ONE DIMENSION WIDTH OR HEIGHT MUST NOT EXCEED 60" (1524mm).

SPECIFY REQUIREMENTS IN SCHEDULE BELOW:

- A - HORIZONTAL BAR SPACING: SPECIFY HORIZONTAL MEMBERS ON MINIMUM 2"(50.8mm) TO MAXIMUM 12"(304.8mm) CENTER SPACING
- B - VERTICAL BAR SPACING: SPECIFY VERTICAL MEMBERS ON MINIMUM 2"(50.8mm) TO MAXIMUM 12"(304.8mm) CENTER SPACING
- C - GRILLE DEPTH: SPECIFY MINIMUM 2"(50.8mm) TO MAXIMUM 6"(152.4mm) DEPTH
- D - WALL THICKNESS: SPECIFY MINIMUM 0.125"(3.18mm) TO MAXIMUM 0.25" (6.35mm) EXTRUDED ALUMINUM 6063-T5 ALLOY WALL THICKNESS
- E - HORIZONTAL BAR ANGLE: SPECIFY MINIMUM 0° TO MAXIMUM 45° ANGLE

GRILLE FINISH

- NATURAL MILL
- PRIME COAT
- BAKED ENAMEL
- KYNAR 500 (2 COAT)
- KYNAR 500 (3 COAT) SPECIFY COLOR SELECTION:
- ANODIZE
  - 215-R1 CLEAR
  - LIGHT BRONZE
  - MEDIUM BRONZE
  - DARK BRONZE
  - BLACK

SCREEN

- NONE
- INTERIOR
- MESH
  - INSECT
  - 1/2"(12.7MM) MESH BIRD
  - \_\_\_\_\_
- SCREEN MATERIAL
  - STAINLESS STEEL
  - ALUMINUM
  - \_\_\_\_\_
- SCREEN FINISH
  - NATURAL
  - \_\_\_\_\_

INSTALLATION METHOD

- CLIP ANGLES
- HOLES IN PERIMETER
- NONE
- OTHER \_\_\_\_\_

INSTALLATION FINISH

- NATURAL
- \_\_\_\_\_

CONSTRUCTION METHOD

ALL-WELDED ASSEMBLY



ITEM	QTY.	A	B	C	D	E	OPENING SIZE		GRILLE SIZE		SECT QTY.	SECTION SIZE	
							WIDTH	HEIGHT	WIDTH	HEIGHT		WIDTH	HEIGHT



This drawing and the design represented are the confidential and proprietary property of THE AIROLITE COMPANY and may not be disclosed, loaned, copied or used for any purpose other than design review and approval without the expressed written consent of THE AIROLITE COMPANY.

LOUVER TYPE **ANGULAR BAR GRILLE**

MATERIAL: EXTRUDED ALUMINUM

DATE: 4-7-09

REV. NO:

FILE: STD ANGULAR