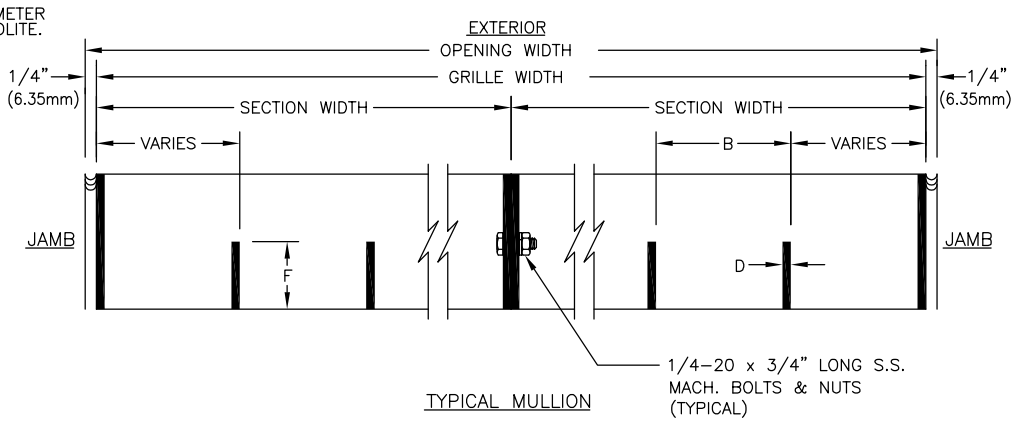
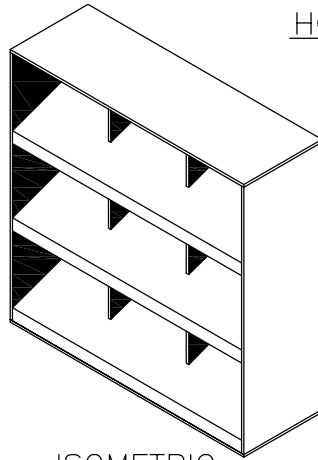


VERTICAL SECTION



HORIZONTAL SECTION



ISOMETRIC

SECTION SIZE LIMITS

| | MINIMUM | MAXIMUM |
|--------|-------------|---------------------------------|
| WIDTH | 10" (254MM) | 120" * (3048MM) |
| HEIGHT | 10" (254MM) | 120" * (3048MM) |
| AREA | | 40 SQ. FT.(3.72M ²) |

* ONE DIMENSION WIDTH OR HEIGHT MUST NOT EXCEED 60" (1524mm).

SPECIFY REQUIREMENTS IN SCHEDULE BELOW:

- A - HORIZONTAL BAR SPACING: SPECIFY HORIZONTAL MEMBERS ON MINIMUM 2"(50.8mm) TO MAXIMUM 12"(304.8mm) CENTER SPACING
- B - VERTICAL BAR SPACING: SPECIFY VERTICAL MEMBERS ON MINIMUM 2"(50.8mm) TO MAXIMUM 12"(304.8mm) CENTER SPACING
- C - GRILLE DEPTH: SPECIFY MINIMUM 2"(50.8mm) TO MAXIMUM 6"(152.4mm) DEPTH
- D - WALL THICKNESS: SPECIFY MINIMUM 0.125"(3.18mm) TO MAXIMUM 0.25" (6.35mm) EXTRUDED ALUMINUM 6063-T5 ALLOY WALL THICKNESS
- E - HORIZONTAL BAR ANGLE: SPECIFY MINIMUM 0° TO MAXIMUM 45° ANGLE
- F - VERTICAL BAR DEPTH: SPECIFY MINIMUM 1" (25.4mm) MAXIMUM 6" (125.4mm)

GRILLE FINISH

- NATURAL MILL
- PRIME COAT
- BAKED ENAMEL
- KYNAR 500 (2 COAT)
- KYNAR 500 (3 COAT)
- SPECIFY COLOR SELECTION:
- ANODIZE
- 215-R1 CLEAR
- LIGHT BRONZE
- MEDIUM BRONZE
- DARK BRONZE
- BLACK

SCREEN

- NONE
- INTERIOR
- MESH
- INSECT
- 1/2"(12.7MM)MESH BIRD
- SCREEN MATERIAL
- STAINLESS STEEL
- ALUMINUM
- SCREEN FINISH
- NATURAL

INSTALLATION METHOD

- CLIP ANGLES
- HOLES IN PERIMETER
- NONE
- OTHER _____

INSTALLATION FINISH

- NATURAL
- _____

CONSTRUCTION METHOD

ALL-WELDED ASSEMBLY



| ITEM | QTY. | A | B | C | D | E | F | OPENING SIZE | | GRILLE SIZE | | SECT QTY. | SECTION SIZE | |
|------|------|---|---|---|---|---|---|--------------|--------|-------------|--------|-----------|--------------|--------|
| | | | | | | | | WIDTH | HEIGHT | WIDTH | HEIGHT | | WIDTH | HEIGHT |
| | | | | | | | | | | | | | | |
| | | | | | | | | | | | | | | |
| | | | | | | | | | | | | | | |



This drawing and the design represented are the confidential and proprietary property of THE AIROLITE COMPANY and may not be disclosed, loaned, copied or used for any purpose other than design review and approval without the expressed written consent of THE AIROLITE COMPANY.

LOUVER TYPE **SOLAR-LINE BAR GRILLE**

MATERIAL: EXTRUDED ALUMINUM

DATE: 4-7-09

REV. NO:

FILE: STD SOLAR