

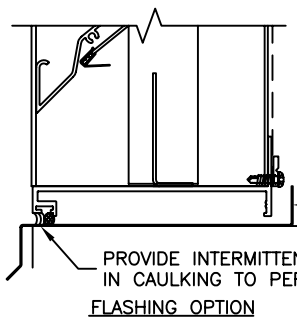
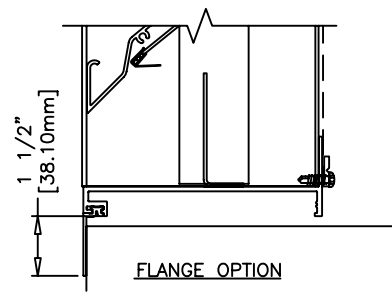
0.125" (3mm) EXTRUDED ALUMINUM FRAME

SEALANT AND BACKER ROD NOT BY AIROLITE

1/4" [6.35mm]

SECTION WIDTH
LOUVER WIDTH
OPENING WIDTH

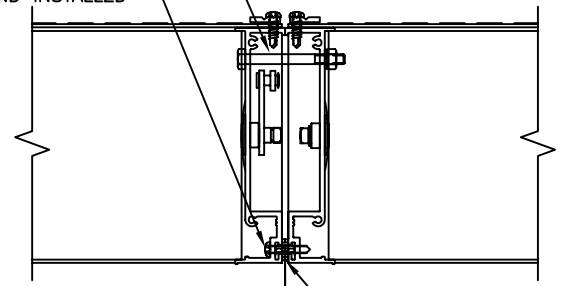
1/4" [6.35mm]



FLASHING MUST EXTEND FULL DEPTH OF LOUVER ASSEMBLY. SEAL ENDS WATERTIGHT.

1/4-20 x 2.5 HWH BOLT & NUT FIELD DRILL & INSTALL 1 @ HEAD.

#10 x 1 HWH SS TEK ALTERNATE DIRECTION 16" O.C. FIELD DRILLED AND INSTALLED



SEALANT AS REQUIRED, NOT BY AIROLITE

SECTION WIDTH
SECTION WIDTH
LOUVER WIDTH
OPENING WIDTH

This drawing and the design represented are the confidential and proprietary property of The Airlite Company, LLC and may not be disclosed, loaned, copied or used for any purpose other than design review and approval without the expressed written consent of The Airlite Company, LLC.

AIROLITE
The look that works.™
Marietta, Ohio USA

MODEL: K8206 SHEET: 1