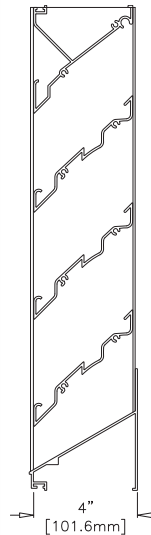




## DRAINABLE LOUVER

|  |                                       |
|--|---------------------------------------|
| <b>Visible Mullion Louver Type</b> .....   | K6844                                 |
| <b>Recessed Mullion Louver Type</b> .....  | CB6844                                |
| <b>Material</b> .....  | Extruded Aluminum (Alloy 6063-T5)     |
| <b>Stationary Blade</b> .....  | 0.081 in. (2.06 mm)                   |
| <b>Frame</b> .....   | 0.081 in. (2.06 mm)                   |
| <b>Louver Depth</b> .....  | 4 in. (101.6 mm)                      |
| <b>Blade Angle</b> .....   | 45°                                   |
| <b>Free Area – 4 ft. x 4 ft. Unit</b> .....  | 8.22 sq. ft. (0.76 sq m)              |
| <b>Percent Free Area</b> .....   | 51.3%                                 |
| <b>Free Area Velocity at Beginning Point of Water Penetration – 0.01 oz H<sub>2</sub>O/sq. ft. Free Area</b> ..... | 992 fpm (5.04 m/s)                    |
| <b>Air Volume Flow Rate at Beginning Point of Water Penetration – 4 ft. x 4 ft. Unit</b> .....                     | 9,140 cfm (4.294 m <sup>3</sup> /s)   |
| <b>Pressure Drop at Beginning Point of Water Penetration</b> .....   | 0.16 in. H <sub>2</sub> O (0.040 kPa) |



## RECOMMENDED SPECIFICATION

### GENERAL

Furnish and install where indicated on plans or described in schedules dual-drainable Louver Type K6844 (or CB6844) as designed and manufactured by The AiroLite Company LLC, Schofield, Wisconsin. Louvers shall be furnished with bird screen, insect screen, supports, installation hardware and finishes as specified and as required for a complete installation.

### SUBMITTALS

Manufacturer shall submit shop drawings incorporating key plans, elevations, sections and details showing profiles, angles and spacing of louver blades and frames; unit dimensions related to wall openings and construction; and, anchorage details and locations. Provide samples of manufacturer's finish and color charts showing the full range of colors available. For each type of product specified, submit free area, air performance and water penetration ratings determined in accordance with AMCA Standard 500-L and licensed under the AMCA Certified Ratings Program.

### PRODUCTS

Louvers shall be dual-drainable Louver Type K6844 with visible vertical mullions (or CB6844 with concealed vertical mullions). Louvers shall be 4-inches (101.6 mm) deep and assembled entirely from extruded aluminum components. Blades and frames shall be 0.081-inch (2.0 mm) thick extruded aluminum, alloy 6063-T5. Blades shall be stationary, incorporate two drainable gutters, and be spaced 4.125-inches (104.8 mm) on center. Jamb frames shall incorporate two drainable gutters to provide maximum water-carrying capacity.

### STRUCTURAL DESIGN CRITERIA

Manufacturer shall design and furnish all supports required to withstand a wind force of not less than 25 pounds per square foot. Louvers larger than 84-inches wide x 120-inches high or 120-inches wide x 84-inches high will be fabricated and installed in multiple sections. Louver blades, frames, mullions and anchorages shall be demonstrated to withstand the specified wind design load.

### PERFORMANCE RATINGS

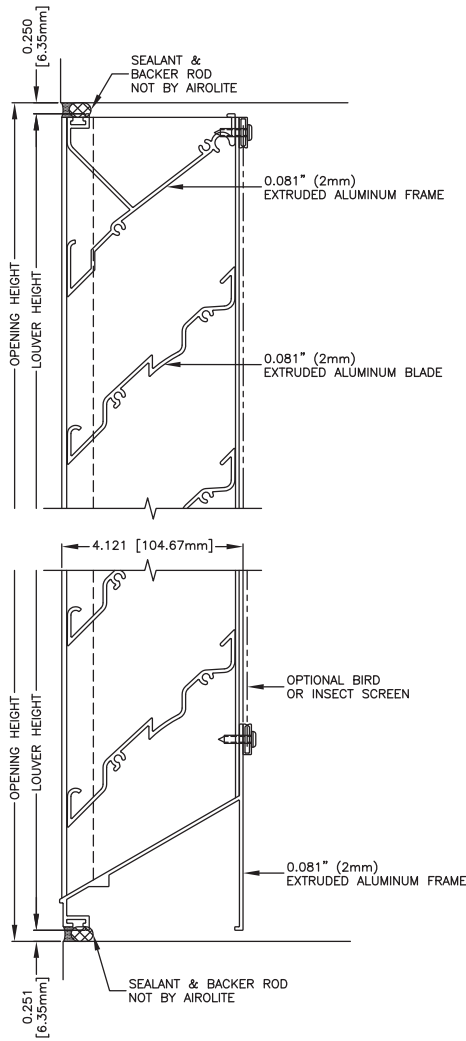
|   |   |
|---|---|
| FREE AREA:  | 8.22 Square Feet (0.76 m <sup>2</sup> ) |
| MINIMUM FREE AREA VELOCITY at Beginning Point of Water Penetration:   | 992 fpm (5.04 m/s)                      |
| MINIMUM AIR VOLUME FLOW RATE at Beginning Point of Water Penetration: | 9,140 cfm (4.294 m <sup>3</sup> /s)     |
| MAXIMUM STATIC PRESSURE at Beginning Point of Water Penetration:      | 0.16 in. H <sub>2</sub> O (0.040 kPa)   |

See page 4 for complete finish options

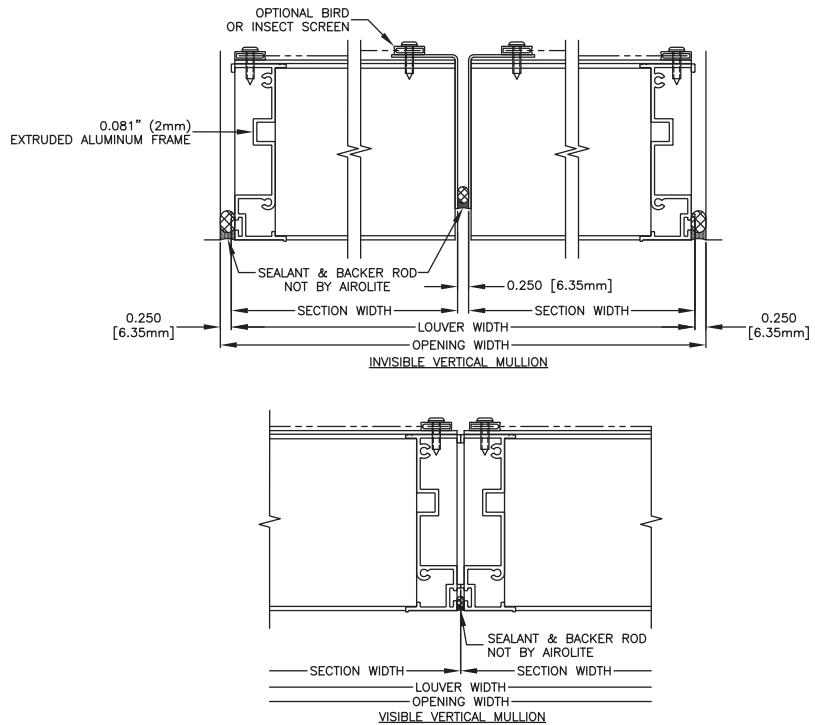
# LOUVER TYPE K6844 PRODUCT DESCRIPTION & DETAILS

**AIROLITE LOUVER TYPE K6844** is a 4-inch (101.6 mm) deep dual-drain louver designed to achieve high volume air flow and superior resistance to water penetration. Dual-drain louvers incorporate two gutters in each blade to prevent water droplets from cascading from blade-to-blade and becoming entrained in the intake air flow. Louver Type K6844 also incorporates two vertical gutters in each jamb frame to carry water to the sill frame where it exits from louver assembly between the sill frame and bottom blade. Dual-drain louvers maximize the water-carrying capability of drainable louvers and provide excellent resistance to water penetration. Specify Louver Type K6844 with visible vertical mullions; and, Louver Type CB6744 with concealed vertical mullions. Aiolite Louver Type K6844 is an efficient louver with AMCA Licensed air performance and water penetration ratings that enable designers to select and specify this product with confidence. Please contact your local Aiolite representative or the factory for assistance with the layout and design of support systems when required.

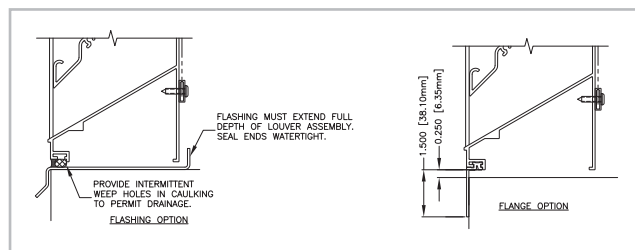
## VERTICAL SECTION DETAIL



## PLAN SECTION DETAIL



## ACCESSORY ITEMS



### Minimum Section Size:

12 in. (30 cm) W x 12 in. (30 cm) H

### Maximum Section Size:


120 in. (305 cm) W x 120 in. (305 cm) H

\*one dimension cannot exceed 84 in.

# LOUVER TYPE K6844 PERFORMANCE RATINGS

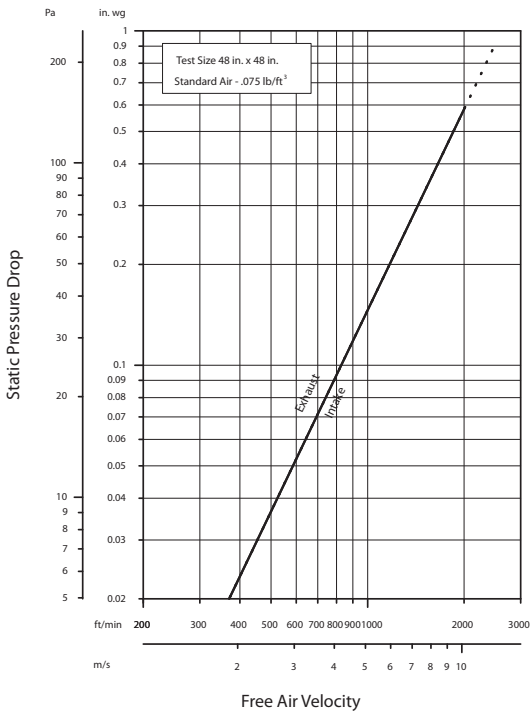
## FREE AREA CHART - in square feet

| Louver Height Inches | Louver Width in Inches |      |       |       |       |       |       |       |       |       |       |       |       |
|----------------------|------------------------|------|-------|-------|-------|-------|-------|-------|-------|-------|-------|-------|-------|
|                      | 12                     | 18   | 30    | 36    | 48    | 54    | 66    | 72    | 84    | 90    | 102   | 108   | 120   |
| 12                   | 0.31                   | 0.50 | 0.90  | 1.10  | 1.44  | 1.64  | 2.04  | 2.24  | 2.63  | 2.83  | 3.17  | 3.37  | 3.76  |
| 18                   | 0.51                   | 0.85 | 1.51  | 1.84  | 2.43  | 2.76  | 3.43  | 3.76  | 4.42  | 4.76  | 5.33  | 5.66  | 6.32  |
| 24                   | 0.78                   | 1.29 | 2.30  | 2.81  | 3.70  | 4.21  | 5.22  | 5.73  | 6.74  | 7.25  | 8.12  | 8.62  | 9.64  |
| 30                   | 1.00                   | 1.65 | 2.95  | 3.60  | 4.74  | 5.39  | 6.69  | 7.34  | 8.64  | 9.29  | 10.40 | 11.05 | 12.35 |
| 36                   | 1.26                   | 2.07 | 3.71  | 4.52  | 5.96  | 6.77  | 8.41  | 9.22  | 10.85 | 11.67 | 13.07 | 13.89 | 15.52 |
| 42                   | 1.54                   | 2.53 | 4.53  | 5.52  | 7.28  | 8.27  | 10.27 | 11.26 | 13.26 | 14.25 | 15.97 | 16.96 | 18.96 |
| 48                   | 1.74                   | 2.86 | 5.12  | 6.24  | 8.22  | 9.35  | 11.60 | 12.73 | 14.98 | 16.11 | 18.04 | 19.17 | 21.42 |
| 54                   | 2.01                   | 3.32 | 5.93  | 7.23  | 9.53  | 10.83 | 13.44 | 14.74 | 17.35 | 18.66 | 20.90 | 22.20 | 24.81 |
| 60                   | 2.21                   | 3.65 | 6.52  | 7.96  | 10.48 | 11.92 | 14.79 | 16.23 | 19.10 | 20.54 | 23.00 | 24.44 | 27.31 |
| 66                   | 2.49                   | 4.10 | 7.33  | 8.94  | 11.78 | 13.39 | 16.61 | 18.23 | 21.45 | 23.07 | 25.84 | 27.45 | 30.67 |
| 72                   | 2.69                   | 4.44 | 7.93  | 9.67  | 12.74 | 14.49 | 17.98 | 19.72 | 23.21 | 24.96 | 27.95 | 29.70 | 33.19 |
| 78                   | 2.96                   | 4.88 | 8.73  | 10.65 | 14.03 | 15.95 | 19.79 | 21.71 | 25.56 | 27.45 | 30.78 | 32.70 | 36.54 |
| 84                   | 3.17                   | 5.23 | 9.34  | 11.40 | 15.02 | 17.08 | 21.19 | 23.25 | 27.36 | 29.42 | 32.95 | 35.01 | 39.13 |
| 90                   | 3.44                   | 5.67 | 10.13 | 12.36 | 16.28 | 18.51 | 22.97 | 25.20 | 29.66 | 31.89 | 35.72 | 37.95 | 42.41 |
| 96                   | 3.66                   | 6.03 | 10.78 | 13.15 | 17.32 | 19.70 | 24.44 | 26.82 | 31.56 | 33.94 | 38.01 | 40.38 | 45.13 |
| 102                  | 3.92                   | 6.46 | 11.54 | 14.08 | 18.54 | 21.08 | 26.16 | 28.70 | 33.78 | 36.32 | 40.68 | 43.22 | 48.30 |
| 108                  | 4.19                   | 6.91 | 12.35 | 15.07 | 19.86 | 22.58 | 28.02 | 30.74 | 36.18 | 38.90 | 43.57 | 46.29 | 51.73 |
| 114                  | 4.40                   | 7.25 | 12.95 | 15.80 | 20.81 | 23.66 | 29.36 | 32.21 | 37.92 | 40.77 | 45.99 | 48.51 | 54.21 |
| 120                  | 4.65                   | 7.67 | 13.71 | 16.73 | 22.04 | 25.06 | 31.10 | 34.12 | 40.16 | 43.18 | 48.36 | 51.38 | 57.42 |



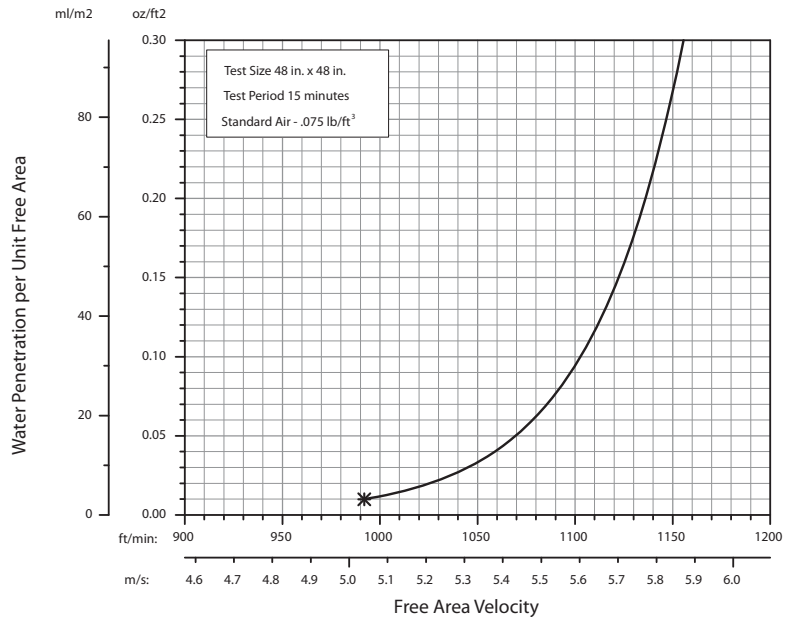
The Airolite Company, LLC certifies that Louver Type K6844 shown herein is licensed to bear the AMCA seal. The ratings shown are based on tests and procedures performed in accordance with AMCA Publication 511 and comply with the requirements of the AMCA Certified Ratings Program. The AMCA Certified Ratings Seal applies only to Air Performance and Water Penetration ratings.

## AIRFLOW RESISTANCE (Standard Air - .075 lb./ft.<sup>3</sup>)



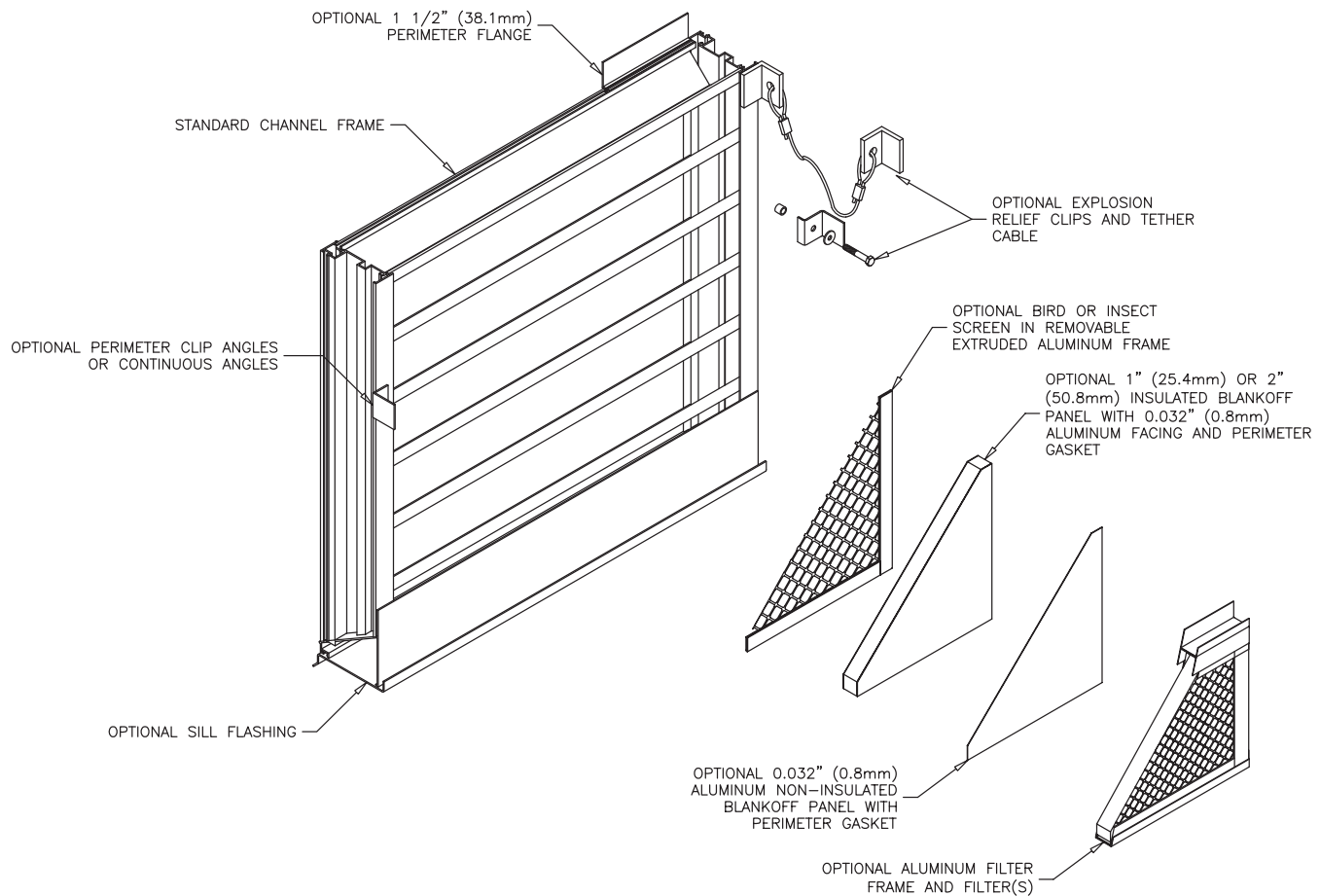
Louver Type K6844 resistance to airflow is shown with louver blades fully open. Resistance (pressure drop) varies depending on louver application (air intake or air exhaust). Free area velocities (shown) are higher than average velocity through the overall louver size.

## WATER PENETRATION (Standard Air - .075 lb./ft.<sup>3</sup>)



The AMCA Water Penetration Test provides a method for comparing various louver models and designs as to their efficiency in resisting the penetration of rainfall under specific laboratory test conditions. The point of zero water penetration is defined as that velocity where the water penetration curve projects through .01 oz. of water (penetration) per sq. ft. of louver free area. **\*The beginning point of water penetration for Louver Type K6844 is 992 fpm free area velocity.** These performance ratings do not guarantee a louver to be weatherproof or stormproof and should be used in combination with other factors including good engineering judgement in selecting louvers.

# LOUVER TYPE K6844 METHOD OF INSTALLATION & ACCESSORY OPTIONS



## FINISHES (Select one of the following)

**ACRYLIC ENAMEL:** Louvers shall be cleaned, pretreated and Finished with an oven-cured thermosetting acrylic enamel finish that meets or exceeds the performance requirements of AAMA 2603, "Voluntary Specification Performance Requirements and Test Procedures for Pigmented Organic Coatings."

**2-COAT FLUOROPOLYMER:** Louvers shall be cleaned, pretreated and Finished with an inhibitive primer and oven-cured Kynar 500® / Hylar 5000® resin coating with minimum 1.2 mils dry-film coating thickness that meets or exceeds the performance requirements of AAMA 2605, "Voluntary Specification, Performance Requirements and Test Procedures for Superior Performance Organic Coatings on Aluminum Extrusions and Panels."

**3-COAT FLUOROPOLYMER:** Louvers shall be cleaned, pretreated and Finished with an inhibitive primer and oven-cured Kynar 500® / Hylar 5000® resin coating with minimum 2.0 mils dry-film coating thickness that meets or exceeds the performance requirements of AAMA 2605, "Voluntary Specification, Performance Requirements and Test Procedures for Superior Performance Organic Coatings on Aluminum Extrusions and Panels."

**CLEAR ANODIZE:** Louvers shall be Finished with a Class I clear anodized coating (AA-M10C22A41) that complies with the performance requirements of AAMA Specification 611-98, "Voluntary Specification for Anodized Architectural Aluminum."

**COLOR ANODIZE:** Louvers shall be Finished with a Class I electrolytically color anodized coating (AA-M10C22A42/44) that complies with the performance requirements of AAMA Specification 611-98, "Voluntary Specification for Anodized Architectural Aluminum." Color shall be (select one): Champagne, Light Bronze, Medium Bronze, Dark Bronze, Extra Dark Bronze or Black Anodize.



P.O. Box 410, 525 Western Road, Schofield, WI 54476-0410 USA  
715.841.8757 • fax 715.841.8773 • www.airolite.com

Submittal K6844 June 2006, Revision 3  
Copyright ©2006 The Airolite Company, LLC

The Airolite Company, LLC reserves the right to make product changes.