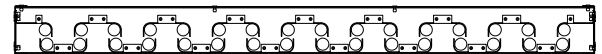




FABRICATED STEEL SAND LOUVER

Visible Mullion Louver Type	ASL401
Material	Galvanized Steel
Stationary Blade	18 gauge
Frame	18 gauge
Louver Depth	4 in. (101.6 mm)
Free Area – 4 ft. x 4 ft. Unit	4.28 sq. ft. (0.40 m ²)
Percent Free Area	26.8%
Construction	Mechanically Fastened
Options*	
Material	Aluminum height limited to 60 in.
Bird Screen	½ in. x ½ in. mesh 19 gauge galvanized steel
Filter Rack	Factory Installed



*Additional standard options and accessories also available.

RECOMMENDED SPECIFICATION

GENERAL

Furnish and install where indicated on plans or described in schedules Louver Type ASL401 as designed and manufactured by The AiroLite Company LLC, Schofield, Wisconsin. Louvers shall be furnished with bird screen, insect screen, supports, installation hardware and finishes as specified and as required for a complete installation.

SUBMITTALS

Manufacturer shall submit shop drawings incorporating key plans, elevations, sections and details showing profiles, angles and spacing of louver blades and frames; unit dimensions related to wall openings and construction; and, anchorage details and locations. For each type of product specified, submit free area, Provide samples of manufacturer's finish and color charts showing the standard colors available.

PRODUCTS

Louvers shall be ASL401 with visible mullions. Louvers shall be 4-inches (101 mm) deep and assembled entirely from galvanized steel components. Blades and frames shall be 18 gauge galvanized steel. Blades shall be vertical, sightproof.

STRUCTURAL DESIGN CRITERIA

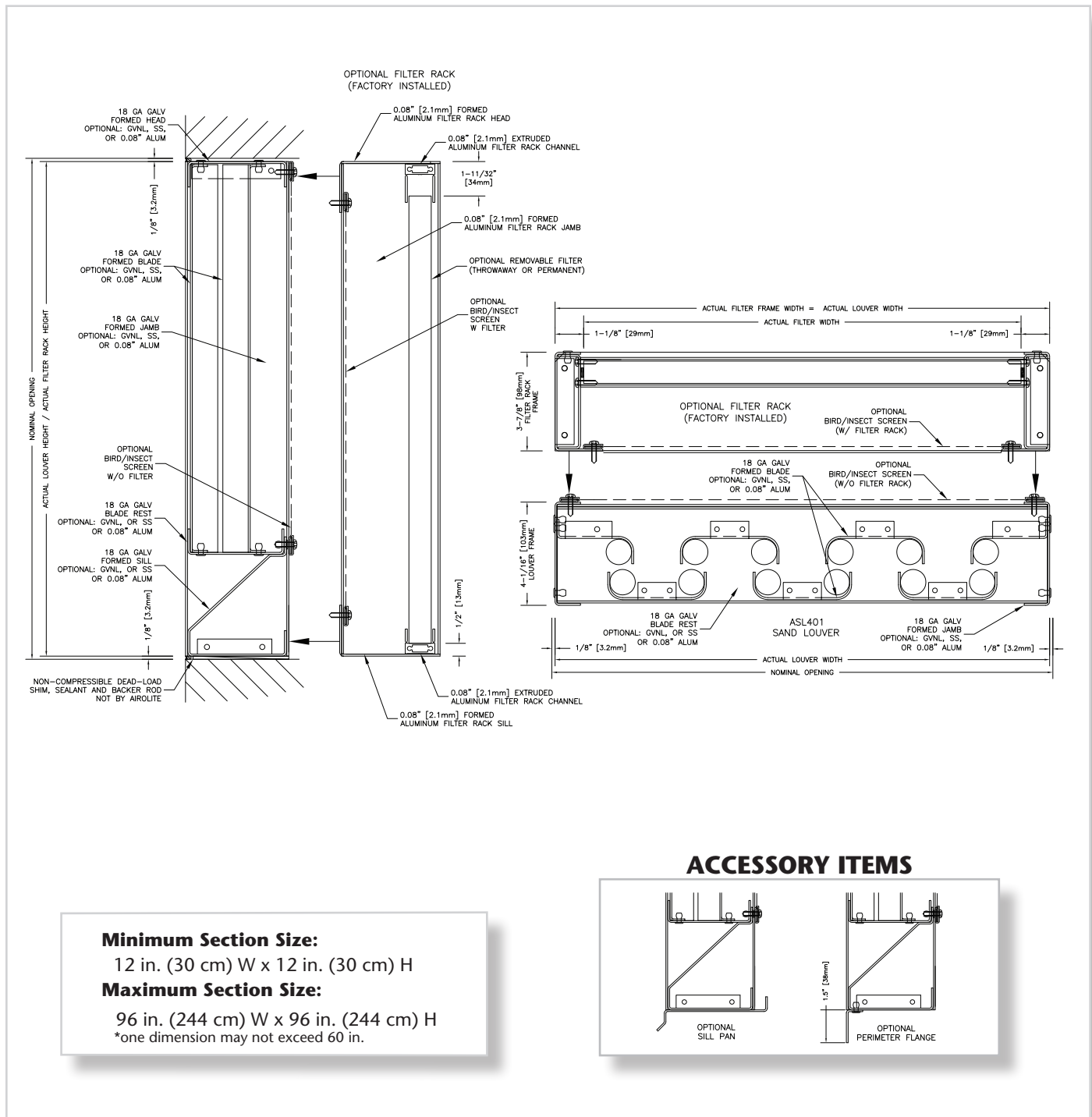
Manufacturer shall design and furnish all supports required to withstand a wind force of not less than 25 pounds per square foot. Louvers larger than 60-inches (152 cm) wide x 96-inches (244 cm) high or 96-inches (244 cm) wide x 60-inches (152 cm) high will be fabricated and installed in multiple sections. Louver blades, frames, mullions and anchorages shall be demonstrated to withstand the specified wind design load.

PERFORMANCE RATINGS

FREE AREA:	4.28 Square Feet (0.40 m ²)
SAND REMOVAL EFFICIENCY:	100% at 250 fpm
AIRFLOW RESISTANCE:	0.50 in. wg at 300 fpm

LOUVER TYPE ASL401 PRODUCT DESCRIPTION & DETAILS

AIROLITE LOUVER TYPE ASL401 is a 4-inch (101 mm) deep, sand louver designed to protect air intake and exhaust openings in building exterior walls from wind-driven sand. The design incorporates vertical sighthproof blades to separate sand from the air stream which is then channeled out at the sloped sill. Louver Type ASL401 is not intended as a substitute for conventional air filters. Louver Type ASL401 is an efficient louver with AMCA Licensed air performance ratings that enable designers to select and specify this product with confidence. Please contact your local Airlite representative or the factory for assistance with the layout and design of support systems when required.



Minimum Section Size:

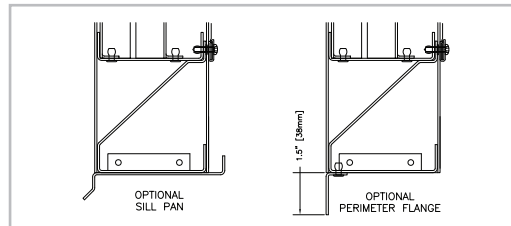
12 in. (30 cm) W x 12 in. (30 cm) H

Maximum Section Size:

96 in. (244 cm) W x 96 in. (244 cm) H

*one dimension may not exceed 60 in.


ACCESSORY ITEMS



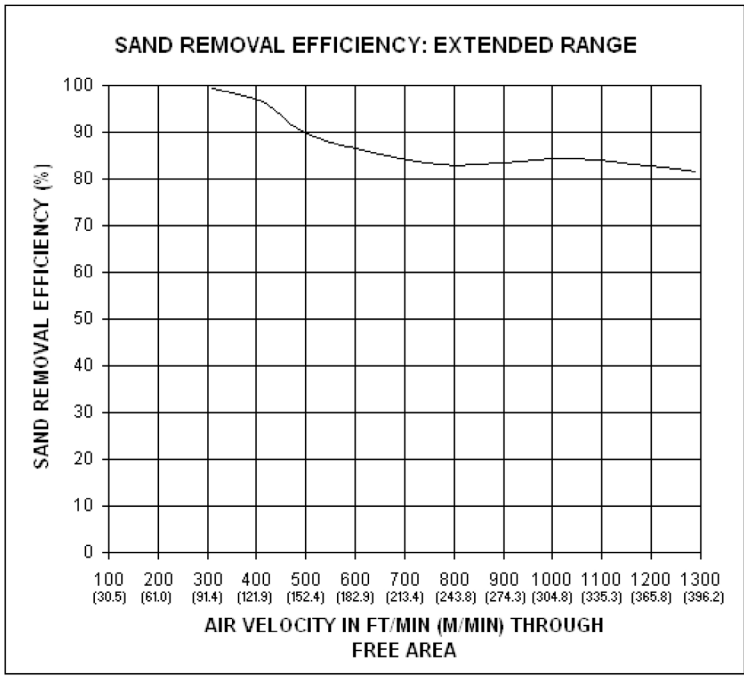
LOUVER TYPE ASL401 PERFORMANCE RATINGS

FREE AREA CHART - in square feet

Louver Height Inches	Louver Width in Inches														
	12	18	24	30	36	42	48	54	60	66	72	78	84	90	96
12	0.10	0.18	0.27	0.35	0.43	0.52	0.59	0.66	0.74	0.81	0.88	0.96	1.03	1.10	1.18
18	0.21	0.38	0.55	0.72	0.89	1.05	1.20	1.35	1.50	1.65	1.81	1.96	2.11	2.26	2.41
24	0.32	0.57	0.83	1.08	1.34	1.59	1.82	2.05	2.27	2.50	2.73	2.95	3.18	3.41	3.63
30	0.43	0.76	1.10	1.45	1.79	2.13	2.43	2.74	3.04	3.35	3.65	3.95	4.26	4.56	4.86
36	0.53	0.96	1.38	1.81	2.25	2.67	3.05	3.43	3.81	4.19	4.57	4.95	5.33	5.71	6.09
42	0.64	1.15	1.66	2.18	2.70	3.21	3.66	4.12	4.58	5.04	5.49	5.95	6.41	6.86	7.32
48	0.75	1.34	1.94	2.55	3.15	3.75	4.28	4.81	5.35	5.88	6.41	6.95	7.48	8.01	8.55
54	0.86	1.54	2.22	2.91	3.60	4.28	4.90	5.51	6.12	6.73	7.34	7.95	8.56	9.17	9.78
60	0.96	1.73	2.50	3.28	4.06	4.82	5.51	6.20	6.88	7.57	8.26	8.94	9.63	10.32	11.00
66	1.07	1.92	2.78	3.64	4.51	5.36	6.13	6.89	7.65	8.42	9.18	9.94	10.71		
72	1.18	2.11	3.06	4.01	4.96	5.90	6.74	7.58	8.42	9.26	10.10	10.94			
78	1.29	2.31	3.34	4.37	5.42	6.44	7.36	8.27	9.19	10.11	11.02				
84	1.39	2.50	3.62	4.74	5.87	6.98	7.97	8.96	9.96	10.95					
90	1.50	2.69	3.90	5.11	6.32	7.52	8.59	9.66	10.73						
96	1.61	2.89	4.17	5.47	6.77	8.05	9.20	10.35	11.49						

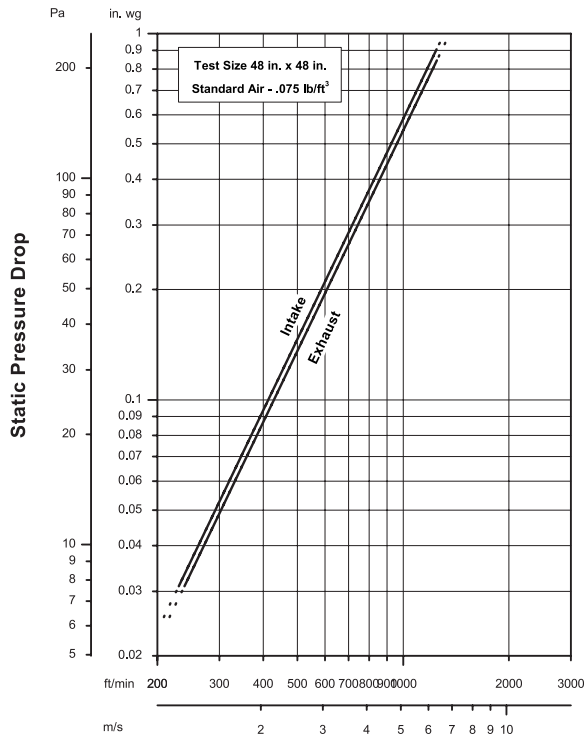


The Airolite Company, LLC certifies that Louver Type ASL401 shown herein is licensed to bear the AMCA seal. The ratings shown are based on tests and procedures performed in accordance with AMCA Publication 511 and comply with the requirements of the AMCA Certified Ratings Program. The AMCA Certified Ratings Seal applies only to Air Performance ratings.



AIRFLOW RESISTANCE

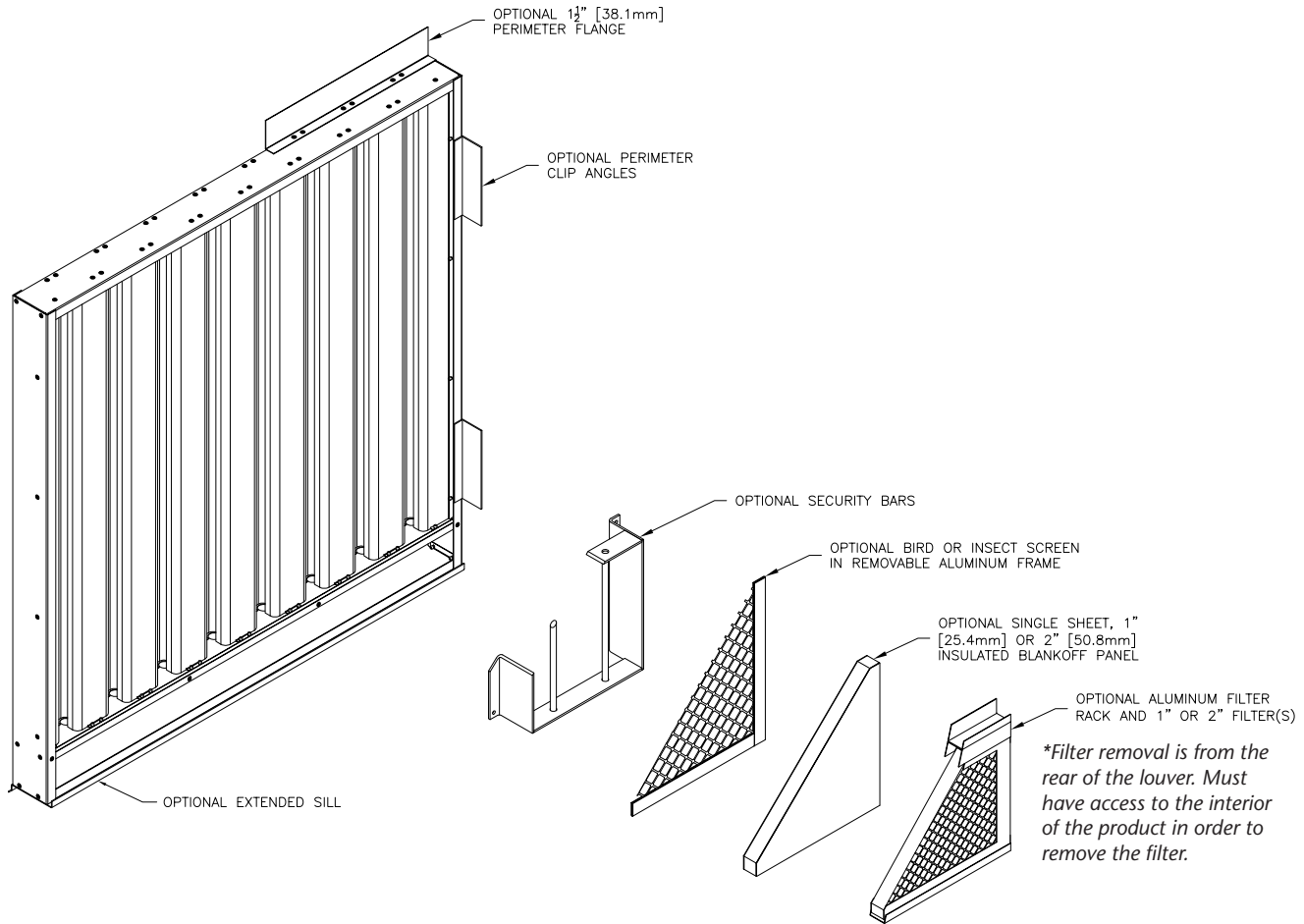
(Standard Air - .075 lb./ft.³)



Sand Removal Efficiency Charts of the ASL401 per ASHRAE Standard Method 52.1-1992 (previously ASHRAE Standard 52-76) as tested by a third party independent test lab using crushed quartz (150-300 μm) dust Medium.

Louver Type ASL401 resistance to airflow varies depending on louver application (air intake or air exhaust). Free area velocities (shown) are higher than the average velocity through the overall louver size.

LOUVER TYPE ASL401 METHOD OF INSTALLATION & ACCESSORY OPTIONS



FINISHES (Select one of the following)

ACRYLIC ENAMEL¹: Louvers shall be cleaned, pretreated and FINISHED-AFTER-ASSEMBLY with an oven-cured thermosetting acrylic enamel finish that meets or exceeds the performance requirements of AAMA 2603, "Voluntary Specification Performance Requirements and Test Procedures for Pigmented Organic Coatings."

2-COAT FLUOROPOLYMER¹: Louvers shall be cleaned, pretreated and FINISHED-AFTER-ASSEMBLY with an inhibitive primer and oven-cured Kynar 500® / Hylar 5000® resin coating with minimum 1.2 mils dry-film coating thickness that meets or exceeds the performance requirements of AAMA 2605, "Voluntary Specification, Performance Requirements and Test Procedures for Superior Performance Organic Coatings on Aluminum Extrusions and Panels."

3-COAT FLUOROPOLYMER¹: Louvers shall be cleaned, pretreated and FINISHED-AFTER-ASSEMBLY with an inhibitive primer and oven-cured Kynar 500® / Hylar 5000® resin coating with minimum 2.0 mils dry-film coating thickness that meets or exceeds the performance requirements of AAMA 2605, "Voluntary Specification, Performance Requirements and Test Procedures for Superior Performance Organic Coatings on Aluminum Extrusions and Panels."

CLEAR ANODIZE²: Louvers shall be FINISHED-AFTER-ASSEMBLY with a Class I clear anodized coating (AA-M10C22A41) that complies with the performance requirements of AAMA Specification 611-98, "Voluntary Specification for Anodized Architectural Aluminum."

COLOR ANODIZE²: Louvers shall be FINISHED-AFTER-ASSEMBLY with a Class I electrolytically color anodized coating (AA-M10C22A42/44) that complies with the performance requirements of AAMA Specification 611-98, "Voluntary Specification for Anodized Architectural Aluminum." Color shall be (select one): Champagne, Light Bronze, Medium Bronze, Dark Bronze, Extra Dark Bronze or Black Anodize.

¹Only Standard finish warranty available. Extended warranty not available. ²Only available with optional aluminum material.



P.O. Box 410, 525 Western Road, Schofield, WI 54476-0410 USA
715.841.8757 • fax 715.841.8773 • www.airolite.com

Submittal ASL401 June 2010, Revision 3
Copyright ©2010 The Aiolite Company, LLC

The Aiolite Company, LLC reserves the right to make product changes.